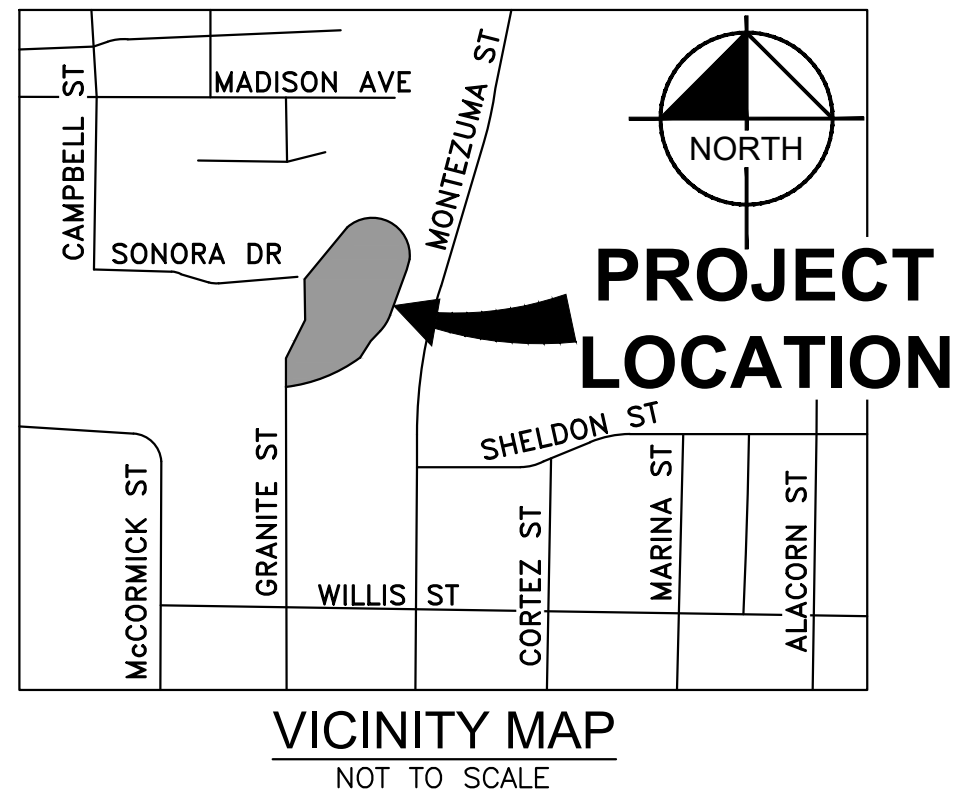


# CITY OF PRESCOTT

## PUBLIC WORKS DEPARTMENT

### CIP# 24-103

# WEST GRANITE CREEK PARK IMPROVEMENTS



Sheet List Table		
Sheet No.	Sheet Title	Sheet Description
01	COVER SHEET	CV01
02	GENERAL NOTES	GN01
03	DETAILS	DT01
04	HORIZONTAL CONTROL	HC01
05	DEMOLITION PLAN	DM01
06	GRADING AND DRAINAGE	GD01
07	LANDSCAPING PLAN	LS01
08	EROSION CONTROL	EC01
09	EROSION CONTROL DETAILS	EC02
10	EROSION CONTROL DETAILS	EC03

#### UTILITY INFORMATION

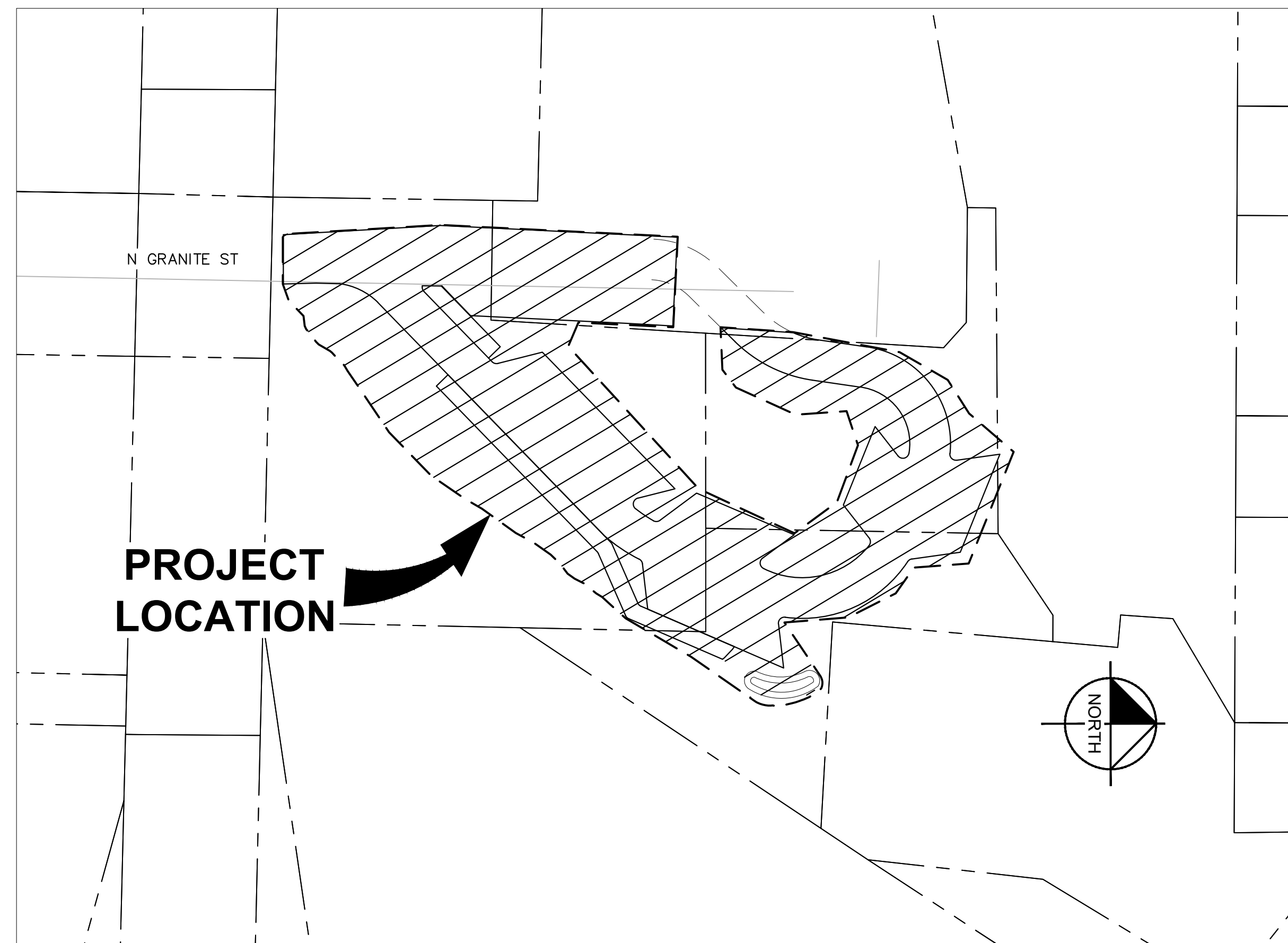
COMPANY	CONTACT	TELEPHONE
ARIZONA PUBLIC SERVICE CO. 6672 CORSAIR PRESCOTT, ARIZONA 86301	SHERYL McCRACKEN	(928)443-6621
LUMEN 1445 MASONRY WAY PRESCOTT, ARIZONA 86301	RODNEY MCKEE	(470)480-7567
UNISOURCE GAS CO. 6405 WILKINSON DRIVE PRESCOTT, ARIZONA 86301	MALI ROSS DIANE SWIGART	(928)771-7227
SPARKLIGHT 3801 TOWER ROAD PRESCOTT, ARIZONA 86301	DOUG HAMILTON	(928)443-3305
CITY OF PRESCOTT WATER AND SEWER P.O. BOX 2059 PRESCOTT, ARIZONA 86301	STEVE OLFERS	(928)777-1130

BLUE STAKE - CALL  
TWO WORKING DAYS  
BEFORE YOU DIG  
1-800-STAKE-IT  
1-800-782-5348  
(OUTSIDE MARICOPA COUNTY)

#### EARTHWORK:

CUT (RAW): 2144 CY  
 FILL (RAW): 580 CY  
 NET (RAW): 1554 CY (CUT)

NOTE: THE QUANTITIES LISTED ABOVE ARE APPROXIMATE. THE CONTRACTOR SHALL MAKE HIS OWN ESTIMATION OF THE QUANTITIES INVOLVED AND BASE HIS ESTIMATE ON HIS OWN QUANTITIES.



#### BASIS OF BEARING

SURVEY CONTROL IS THE CITY OF PRESCOTT SURVEY DATUM, ALSO BEING ARIZONA STATE PLANE ZONE, ARIZONA CENTRAL 0202, NAD 83, NAVD 88 USING GEOD MODEL GEOD99 (CONUS), CITY OF PRESCOTT - CONVERSION FROM STATE PLANE:

NORTHING; (STATE PLANE X 1.000329975) - 701,456.0090

EASTING; (STATE PLANE X 1.000329975) + 69,457.2499

STATE PLANE CONVERSION FROM CITY OF PRESCOTT NORTHING:  
 (CITY OF PRESCOTT + 701,456.0090) X 0.999670134, EASTING:  
 (CITY OF PRESCOTT - 69,457.2499) X 0.999670134

NOTE: CONTRACTOR TO VERIFY LOCATION AND ELEVATION OF EXISTING UTILITIES PRIOR TO CONSTRUCTION. CONTRACTOR IS RESPONSIBLE FOR COORDINATING ANY NECESSARY UTILITY RELOCATION WITH THE APPLICABLE UTILITY.

#### SPECIAL NOTE:

THE CITY OF PRESCOTT STANDARD DETAILS AND SPECIFICATIONS MEET MINIMUM DESIGN REQUIREMENTS OF THE EQUIVALENT MAG SPECIFICATIONS AND STANDARD DETAILS.

APPROVED TRAFFIC CONTROL PLAN AND R.O.W. PERMIT MUST BE OBTAINED FROM PUBLIC WORKS PRIOR TO BEGINNING WORK IN THE R.O.W.

CITY OF PRESCOTT PUBLIC WORKS IS RESPONSIBLE FOR INSPECTION OF IMPROVEMENTS IN THE R.O.W. AND DESIGNATED PUBLIC UTILITY EASEMENTS ONLY. ALL OTHER IMPROVEMENTS (ON-SITE) SHALL BE INDEPENDENTLY INSPECTED.

ENGINEER  
 KIMLEY-HORN & ASSOCIATES, INC.  
 JAMES HUGGINS, PE  
 101 WEST GOODWIN ST, SUITE 303  
 PRESCOTT, AZ 86303  
 (928) 458-7125  
 JAMES.HUGGINS@KIMLEY-HORN.COM

TOPOGRAPHIC SURVEYOR  
 GRANITE BASIN ENGINEERING, INC.  
 TOM LIUZZO  
 1981 COMMERCE CENTER CIRCLE  
 PRESCOTT, AZ 86301  
 (928) 717-0181  
 TOM@GRANITEBASINENGINEERING.COM

MAYOR  
 PHIL GOODE

CITY COUNCIL  
 CONNIE CANTELME  
 BRANDON MONTOYA  
 ERIC MOORE  
 CATHEY RUSING  
 STEVE SISCHKA  
 CLARK TENNEY

#### REVIEWED BY

CITY ENGINEER \_\_\_\_\_ DATE \_\_\_\_\_

UTILITIES MANAGER \_\_\_\_\_ DATE \_\_\_\_\_

#### RECORD DRAWING CERTIFICATION

I HEREBY CERTIFY, TO THE BEST OF MY KNOWLEDGE, INFORMATION AND BELIEF, THAT THIS PROJECT HAS BEEN COMPLETED IN SUBSTANTIAL CONFORMANCE WITH THE APPROVED PLANS, SPECIFICATIONS AND REFERENCED STANDARDS, EXCEPT AS SHOWN HEREON; THAT THESE AS-BUILT PLANS REFLECT THE POSITION OF CONSTRUCTED IMPROVEMENTS BASED ON FIELD MEASUREMENTS; AND THAT THE MATERIALS USED IN CONSTRUCTION ARE AS SHOWN BASED ON FIELD OBSERVATION AND TEST RESULTS.

THIS CERTIFICATION DOES NOT WARRANT MATERIALS, WORKMANSHIP, METHODS OF CONSTRUCTION, OR OTHER ITEMS AFFECTING THE WARRANTY OF THIS PROJECT, TO THE CITY OF PRESCOTT. USERS OF THIS INFORMATION ARE ADVISED TO OBTAIN INDEPENDENT VERIFICATION OF ACTUAL CONDITIONS.

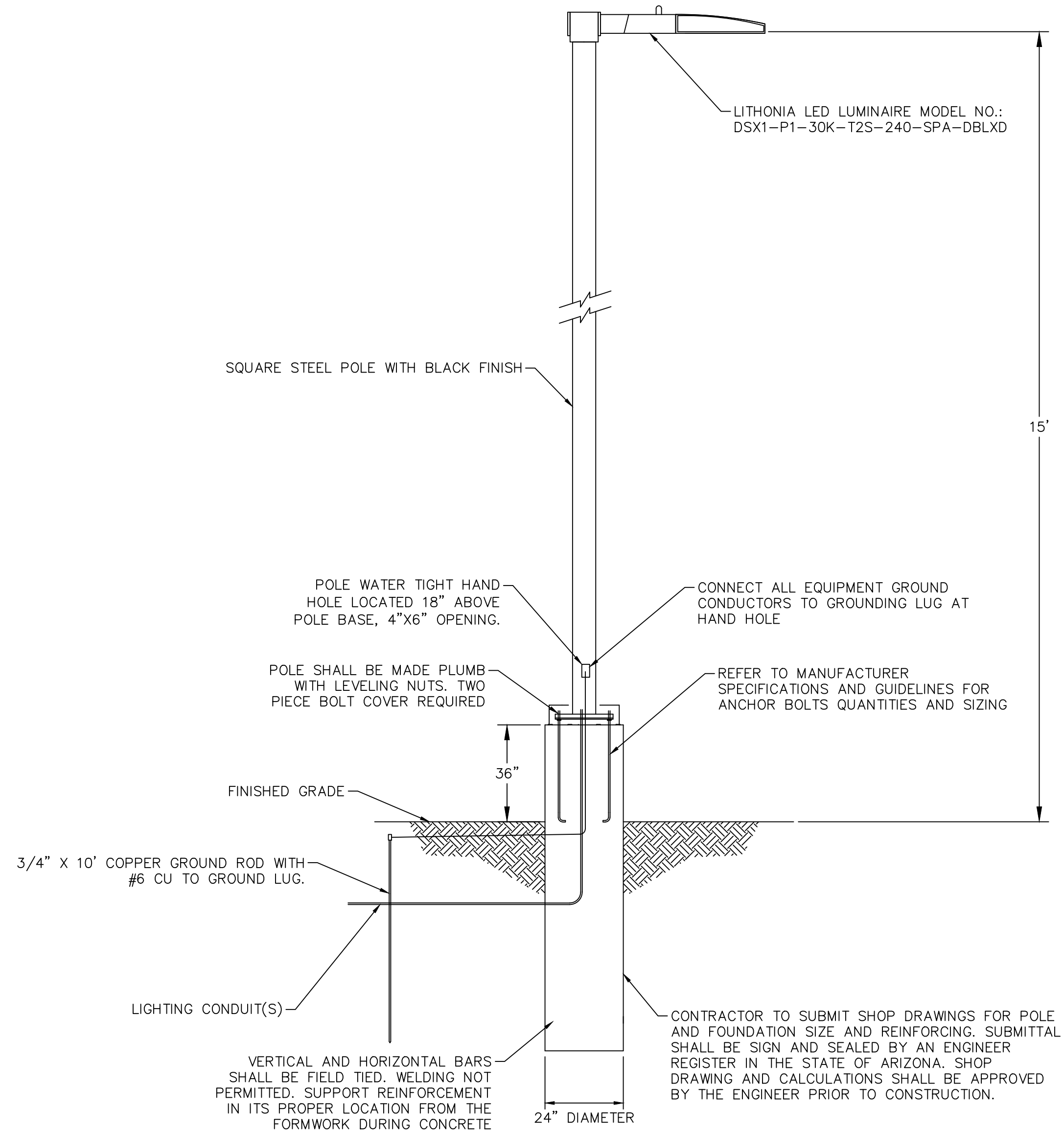
REGISTERED PROFESSIONAL ENGINEER (CIVIL) \_\_\_\_\_ DATE \_\_\_\_\_



DWG. NO. CV01		DATE 11/13/2023		SHEET NO. 01		OF 10	
CITY OF PRESCOTT PUBLIC WORKS				WEST GRANITE CREEK PARKING LOT COVER SHEET			
CITY OF PRESCOTT <i>Everybody's Hometown</i>		FOR: COP	CHECKED BY: JTH	PREPARED BY: ALH			
Professional Engineer 79615 James T. Huggins Date Signed 11/13/23 ARIZONA USA							
Kimley-Horn & Associates, Inc. 2023 KIMLEY-HORN & ASSOCIATES, INC. 101 WEST GOODWIN STREET, SUITE 303 PRESCOTT, ARIZONA 86303 PHONE: 928-458-7125 WWW.KIMLEY-HORN.COM							
NO.	BY	DATE	REVISIONS	APPRV	DATE	CITY	





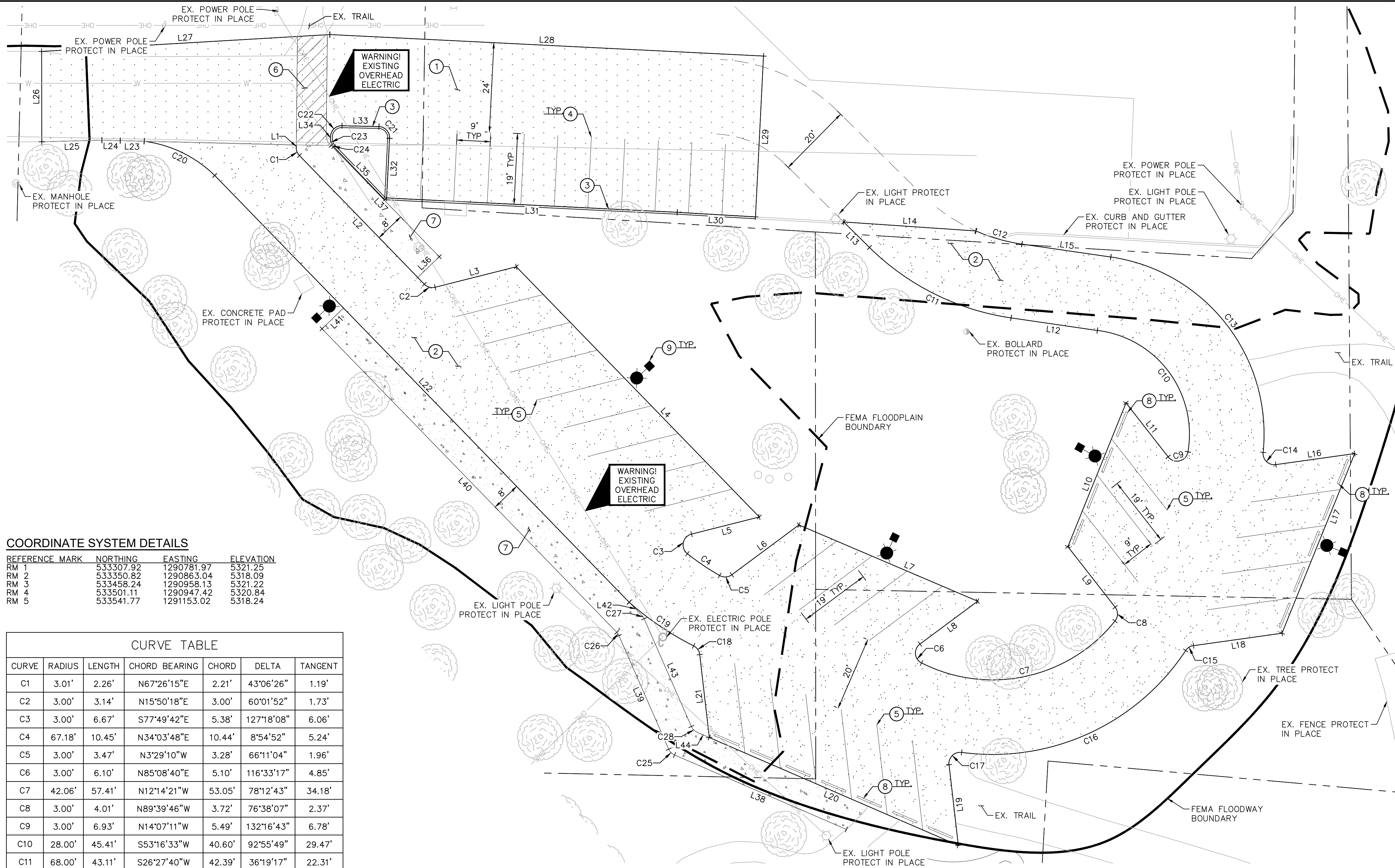


- NOTES:**
- 3500 PSI MIN. 28 DAY COMPRESSIVE STRENGTH CONCRETE WITH GRADE 60 REINFORCING STEEL
  - IF WATER IS PRESENT IN HOLE, REMOVE BEFORE POURING CONCRETE.
  - FOUNDATION EXCAVATION SHALL BE BY 24" AUGER IN UNDISTURBED OR PROPERLY COMPACTED FILL PER SPECIFICATIONS.
  - FOUNDATION SHALL HAVE A MINIMUM ALLOWABLE END BEARING OF 2000 PSF.
  - FOUNDATION HAS BEEN DESIGNED FOR A COHESIVE SOIL BASED ON A MINIMUM COHESIVE VALUE OF 1000 PSF.
  - FOUNDATION HAS BEEN DESIGNED FOR A GRANULAR SOIL BASED ON A MINIMUM LATERAL SOIL PRESSURE OF 1000 PSF, UTILIZING AASHTO FIGURE 1.8.2C(4) OF "EMBEDMENT OF POSTS WITH OVERTURNING LOADS".

**1 LIGHT POLE DETAIL**  
NTS



CITY OF PRESCOTT PUBLIC WORKS		DWG. NO. DT01
WEST GRANITE CREEK PARKING LOT		DATE 11/13/2023
DETAILS		SHEET NO. 03 OF 10
		FOR: COP
PREPARED BY: ALH	CHECKED BY: JTH	
© 2023 KIMLEY-HORN & ASSOCIATES, INC. SUITE 303 WEST GOODWIN STREET, SUITE 303 PHOENIX, AZ 85004 PHONE: 602-498-9700 WWW.KIMLEY-HORN.COM		
NO.	BY	DATE
	ENGINEER	
	REVISIONS	
	APPRV	DATE
		CITY



**COORDINATE SYSTEM DETAILS**

REFERENCE MARK	NORTHING	EASTING	ELEVATION
RM 1	533307.92	1290781.97	5321.25
RM 2	533350.82	1290863.04	5318.09
RM 3	533458.24	1290958.13	5321.22
RM 4	533501.11	1290947.42	5320.84
RM 5	533541.77	1291153.02	5318.24

**CURVE TABLE**

CURVE	RADIUS	LENGTH	CHORD BEARING	CHORD	DELTA	TANGENT
C1	3.01'	2.26'	N67°26'15"E	2.21'	43°06'26"	1.19'
C2	3.00'	3.14'	N15°50'18"E	3.00'	60°01'52"	1.73'
C3	3.00'	6.67'	S77°49'42"E	5.38'	127°18'08"	6.06'
C4	67.18'	10.45'	N34°03'48"E	10.44'	8°54'52"	5.24'
C5	3.00'	3.47'	N3°29'10"W	3.28'	66°11'04"	1.96'
C6	3.00'	6.10'	N85°08'40"E	5.10'	116°33'17"	4.85'
C7	42.06'	57.41'	N12°14'21"W	53.05'	78°12'43"	34.18'
C8	3.00'	4.01'	N89°39'46"W	3.72'	76°38'07"	2.37'
C9	3.00'	6.93'	N14°07'11"W	5.49'	132°16'43"	6.78'
C10	28.00'	45.41'	S53°16'33"W	40.60'	92°55'49"	29.47'
C11	68.00'	43.11'	S26°27'40"W	42.39'	36°19'17"	22.31'
C12	48.00'	12.87'	N15°57'30"E	12.83'	15°21'52"	6.47'
C13	48.00'	73.35'	N52°03'30"E	66.42'	87°33'38"	46.00'
C14	3.00'	5.44'	N43°55'45"E	4.72'	103°49'08"	3.83'
C15	3.00'	2.54'	S32°16'37"E	2.47'	48°35'35"	1.35'
C16	62.06'	69.57'	S24°27'30"W	65.98'	64°13'50"	38.95'
C17	3.00'	5.46'	S44°27'38"E	4.74'	104°14'07"	3.86'
C18	3.00'	2.97'	S55°05'44"W	2.85'	56°39'09"	1.62'
C19	81.75'	20.94'	S34°06'26"W	20.88'	14°40'35"	10.53'
C20	33.00'	21.38'	S25°52'02"W	21.01'	37°07'10"	11.08'
C21	3.00'	4.71'	S47°50'13"W	4.24'	90°00'00"	3.00'
C22	3.00'	4.75'	S44°02'16"E	4.27'	90°42'16"	3.04'
C23	3.00'	1.90'	N72°27'05"E	1.87'	36°19'02"	0.98'
C24	3.00'	0.43'	N50°12'34"E	0.43'	8°09'59"	0.21'
C25	3.00'	2.25'	S44°52'42"W	2.19'	42°54'47"	1.18'
C26	3.00'	1.07'	S56°05'40"W	1.07'	20°28'51"	0.54'
C27	3.00'	1.07'	N56°05'40"E	1.07'	20°28'51"	0.54'
C28	3.00'	2.25'	N44°52'42"E	2.19'	42°54'47"	1.18'

**LINE TABLE**

LINE	LENGTH	BEARING
L1	0.78	S89°20'26.62"E
L2	48.08	N45°51'14.13"E
L3	22.46	N14°10'37.98"W
L4	93.50	N45°51'14.13"E
L5	18.72	S14°10'37.98"E
L6	22.40	N36°34'41.77"W
L7	52.08	N23°07'20.32"E
L8	19.25	S36°34'41.77"E
L9	20.58	S52°01'10.88"W
L10	41.57	N67°58'49.12"W
L11	18.34	N52°01'10.88"E
L12	23.38	S8°18'01.55"W
L13	9.73	S44°37'18.18"W
L14	35.52	N3°52'54.68"E

**LINE TABLE**

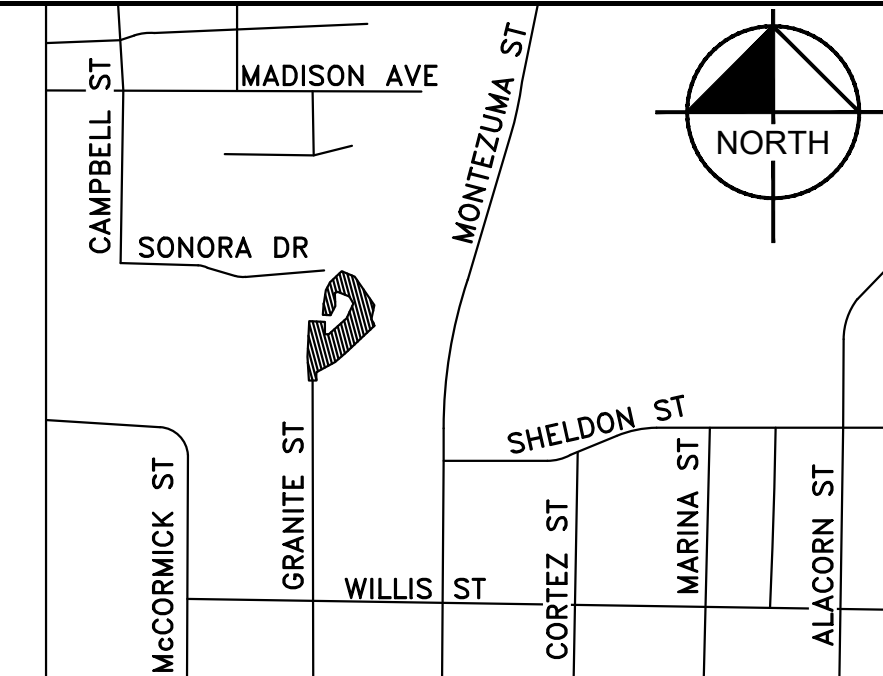
LINE	LENGTH	BEARING
L15	24.07	N8°16'40.51"E
L16	21.33	N7°58'49.12"W
L17	51.96	S67°58'49.12"E
L18	23.95	S7°58'49.12"E
L19	21.74	N83°25'18.23"E
L20	72.75	S23°25'18.23"W
L21	22.37	S83°25'18.23"W
L22	159.47	S45°51'14.13"W
L23	6.42	S1°32'20.05"W
L24	4.92	S1°32'20.05"W
L25	16.13	S1°33'25.77"E
L26	24.22	S89°55'11.16"W
L27	77.38	N3°20'59.02"W
L28	116.37	N2°50'12.93"E

**LINE TABLE**

LINE	LENGTH	BEARING
L29	43.18	S87°09'00.10"E
L30	21.00	S3°20'17.30"W
L31	77.99	S2°50'00.26"W
L32	16.01	N87°09'47.07"W
L33	9.91	S1°18'52.25"W
L34	0.53	S89°23'23.97"E
L35	19.73	N46°07'34.73"E
L36	8.00	N44°08'45.87"W
L37	41.58	S45°51'14.13"W
L38	50.20	S23°25'18.23"W
L39	33.26	S66°20'05.12"W
L40	113.39	S45°51'14.13"W
L41	8.00	N44°08'45.87"W
L42	4.91	N45°51'14.13"E

**LINE TABLE**

LINE	LENGTH	BEARING
L43	31.56	N66°20'05.12"E
L44	3.54	N23°25'18.23"E



**VICINITY MAP**  
NOT TO SCALE

**CONSTRUCTION NOTES**

NO	DESCRIPTION
1	CONSTRUCT 4" ASPHALT CONCRETE ON 4" AGGREGATE BASE. SEE STRUCTURAL SECTION NO. 01 SHEET 03.
2	CONSTRUCT 8" COMPACTED AGGREGATE BASE. SEE STRUCTURAL SECTION NO. 02 SHEET 03.
3	6" VERTICAL CURB PER QUAD CITY STD. DTL. 220Q-1.
4	INSTALL 4" WIDE YELLOW 90° SOLID PARKING STRIPE.
5	INSTALL PARKING DELINEATOR.
6	PAINT 4" WIDE SOLID YELLOW 45° PARKING STRIPE, TWO COATS MINIMUM.
7	CONSTRUCT 2" DG TRAIL, 8' WIDE.
8	INSTALL PRECAST SAFETY CURB PER MAG STD. DTL. 150.
9	FURNISH AND INSTALL (1) LITHONIA LED LUMINAIRE MODEL NO.: DSX1-P1-30K-T2S-240-SPA-DBLXD WITH 15' MOUNTINGHEIGHT ON A 12' POLE PER DETAIL 1 ON SHEET 03.

**NOTES**

- SEE GENERAL NOTES SHEET 02 FOR COMPLETE LEGEND.
- PROTECT IN PLACE ALL EXISTING SURVEY MONUMENTS.

CITY OF PRESCOTT PUBLIC WORKS

**WEST GRANITE CREEK PARKING LOT**

**HORIZONTAL CONTROL**

DWG. NO. HC01  
DATE 11/13/2023  
SHEET NO. 04 OF 10

CITY OF PRESCOTT  
*Everybody's Homeowner*

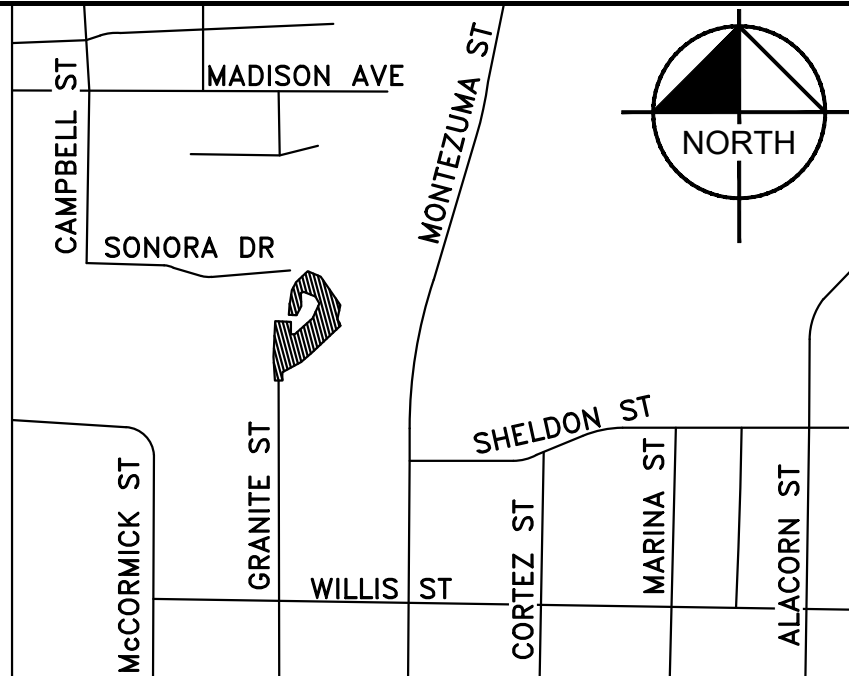
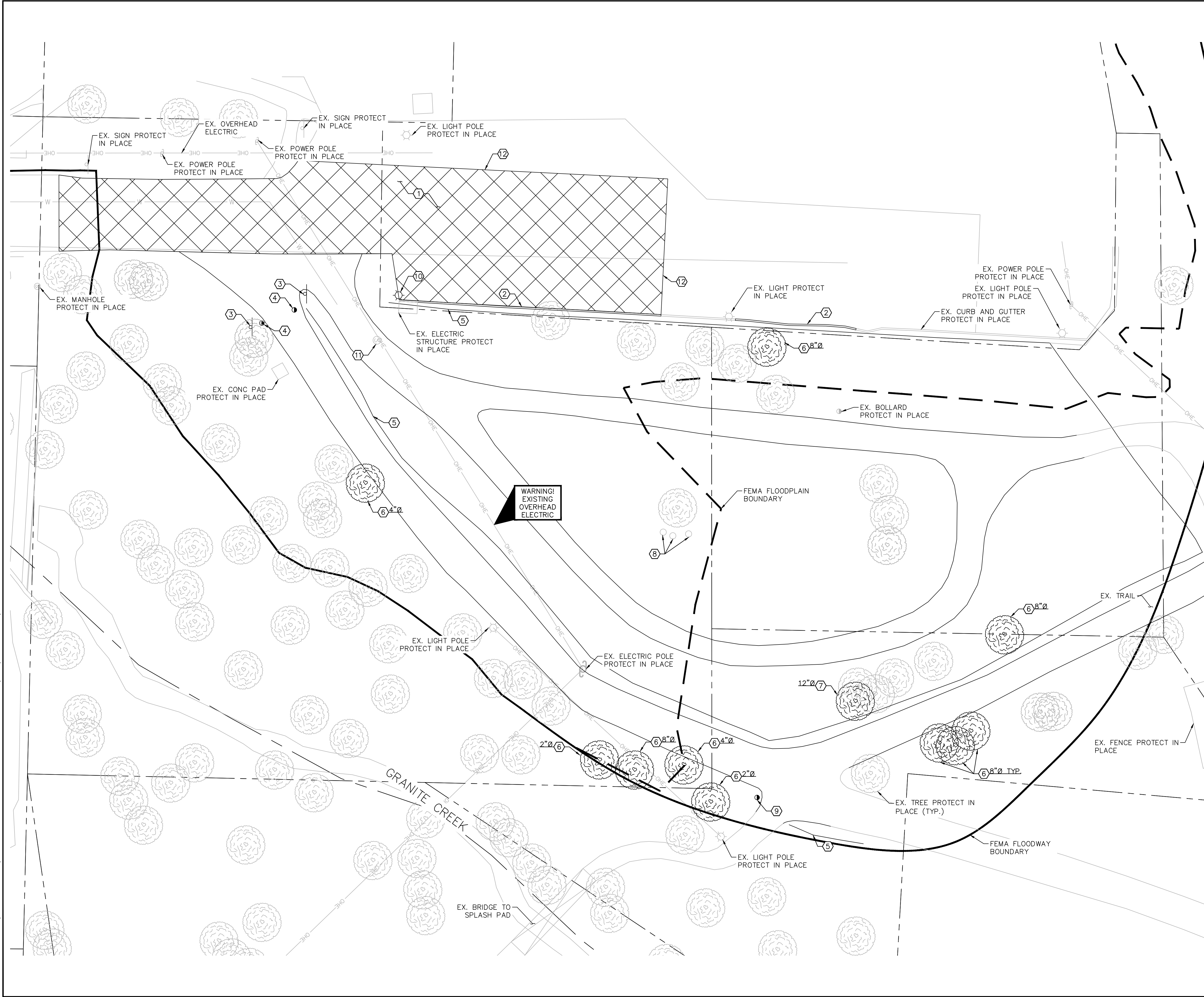
Prepared by: ALH  
Checked by: JTH  
For: COP

Professional Engineer  
79615  
James T. Huggins  
Date Signed: 11/13/2023  
ARIZONA USA

**Kimley-Horn**  
© 2023 KIMLEY-HORN & ASSOCIATES, INC. SUITE 303  
101 WEST GOODWIN STREET, PHOENIX, AZ 85003  
PHONE: 602-498-9120  
WWW.KIMLEY-HORN.COM

NO.	BY	DATE	REVISIONS

APPRV. DATE CITY  
REVIEW: CIP #: 24-103



VICINITY MAP  
NOT TO SCALE

DEMOLITION NOTES

NO	DESCRIPTION
①	REMOVE AND DISPOSE EXISTING ASPHALT PAVEMENT.
②	REMOVE AND DISPOSE EXISTING CURB.
③	REMOVE AND DISPOSE EXISTING SIGN.
④	REMOVE AND DISPOSE EXISTING BOLLARD.
⑤	REMOVE AND DISPOSE EXISTING FENCE.
⑥	REMOVE AND DISPOSE EXISTING TREE LESS THAN OR EQUAL TO 8".
⑦	REMOVE AND DISPOSE EXISTING TREE GREATER THAN 8".
⑧	REMOVE AND DISPOSE EXISTING CONCRETE.
⑨	REMOVE AND RELOCATE EXISTING SIGN.
⑩	REMOVE AND RELOCATE EXISTING LIGHT POLE.
⑪	REBUILD MAHOLE.
⑫	SAWCUT EXISTING PAVEMENT.

**CITY OF PRESCOTT PUBLIC WORKS**

**WEST GRANITE CREEK PARKING LOT DEMOLITION PLAN**

DWG. NO. DM01  
DATE 11/13/2023  
SHEET NO. 05 OF 10

**CITY OF PRESCOTT**  
*Everybody's HomeTown*

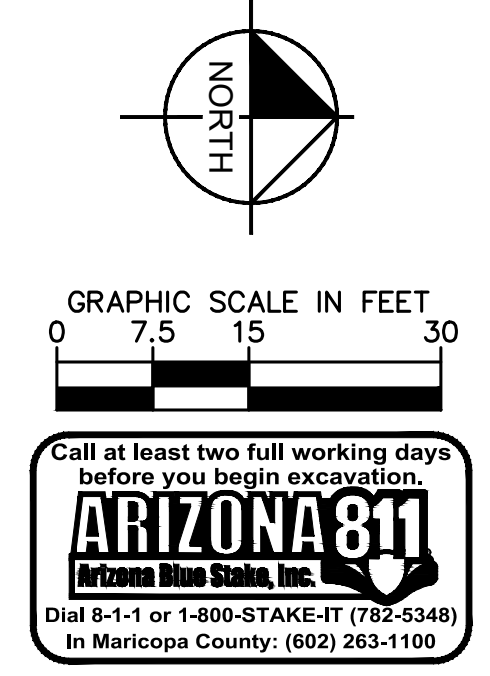
Prepared by: ALH  
Checked by: JTH  
For: COP

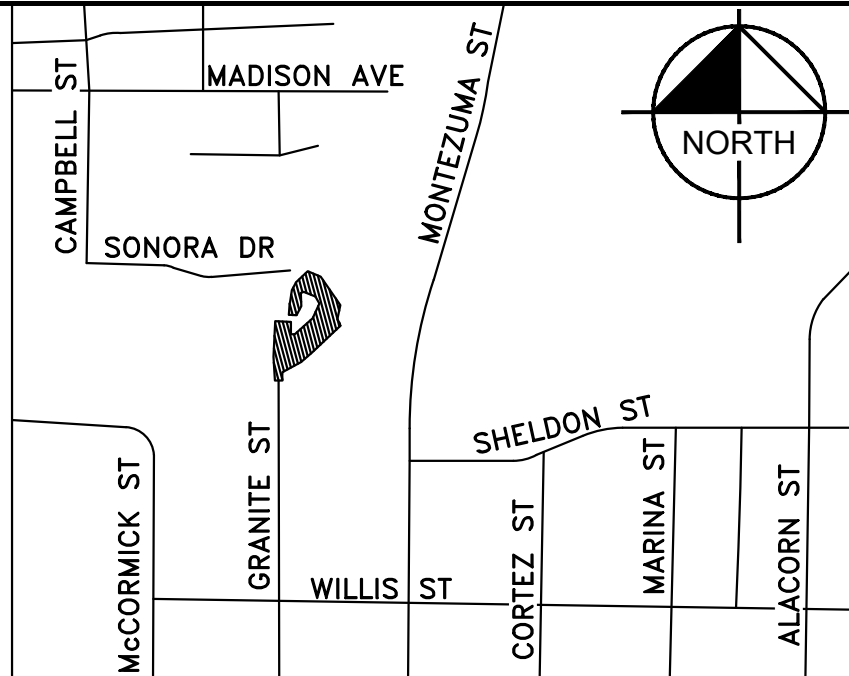
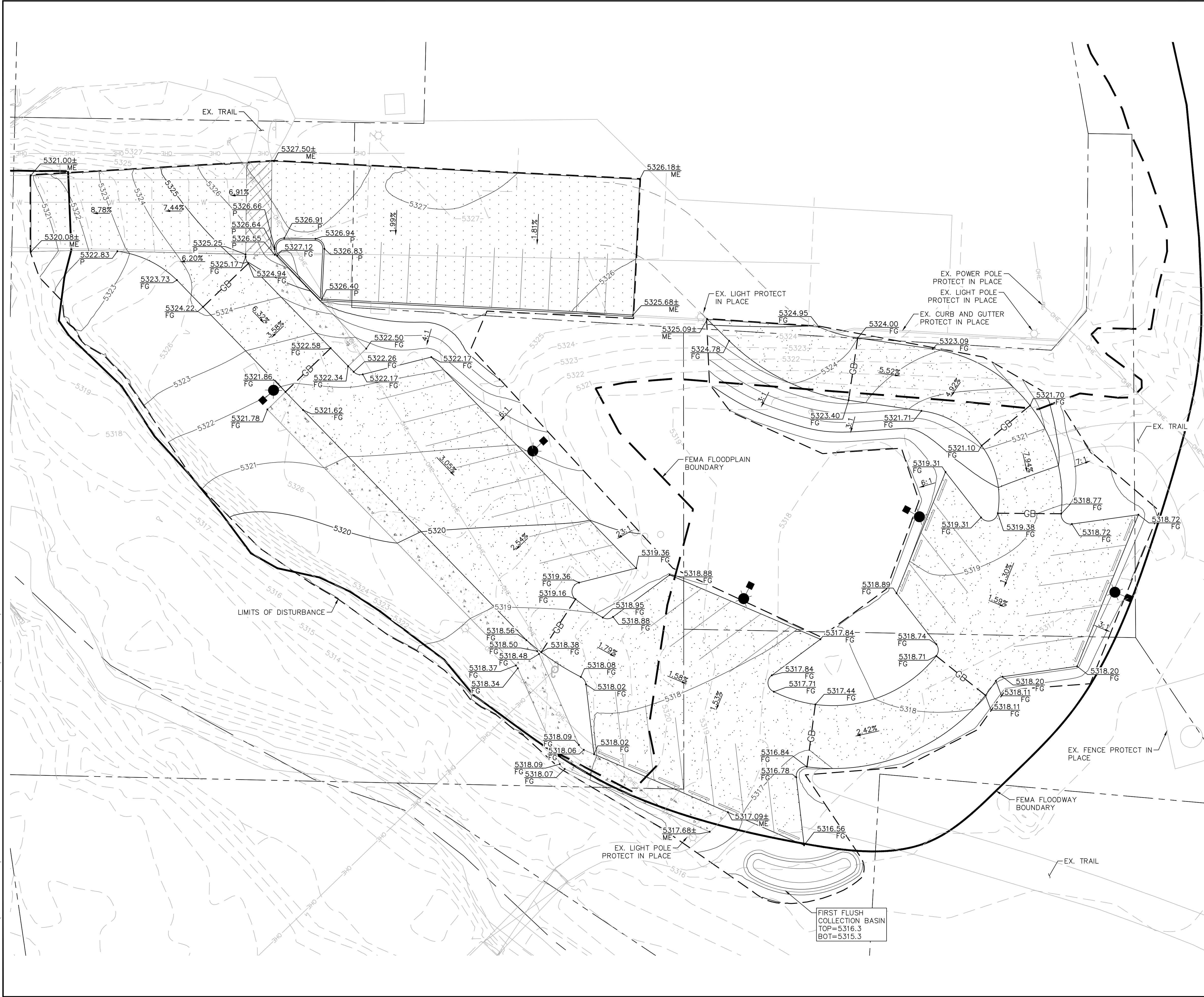
Professional Engineer  
Certificate No. 79615  
James T. Huggins  
Date Signed 11/13/2023  
ARIZONA USA

**Kimley-Horn & Associates, Inc.**  
2033 KIMLEY-HORN & ASSOCIATES, INC. SUITE 303  
101 WEST GOODWIN STREET, SUITE 303  
PHOENIX, ARIZONA 85003  
PHONE: 602-458-9100  
WWW.KIMLEY-HORN.COM

NO.	BY	DATE	REVISIONS

APPRV. DATE CITY  
REVIEW: CIP #: 24-103





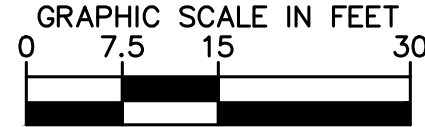
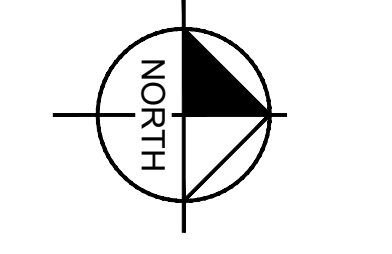
VICINITY MAP  
NOT TO SCALE

**LEGEND**

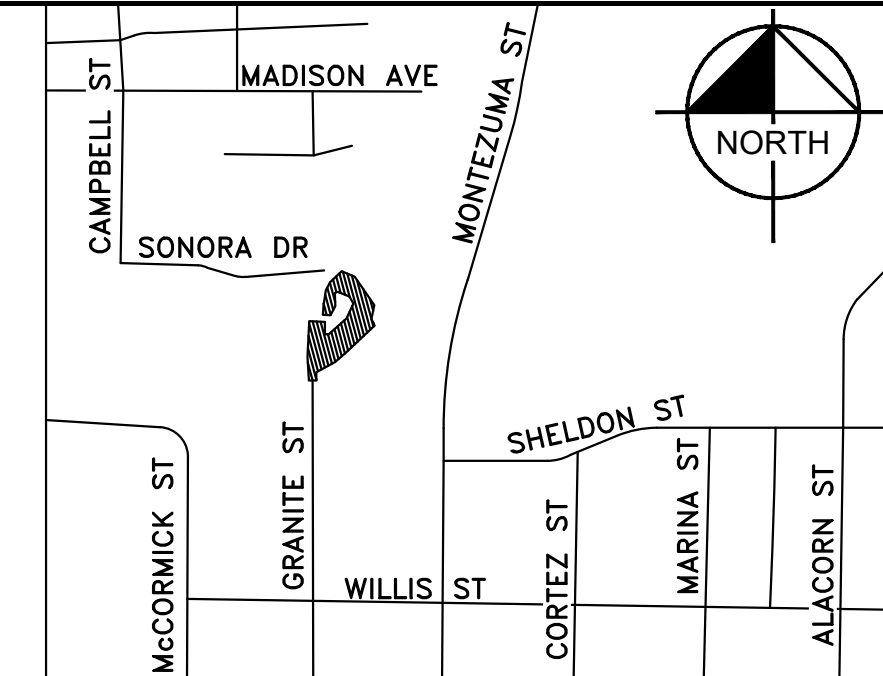
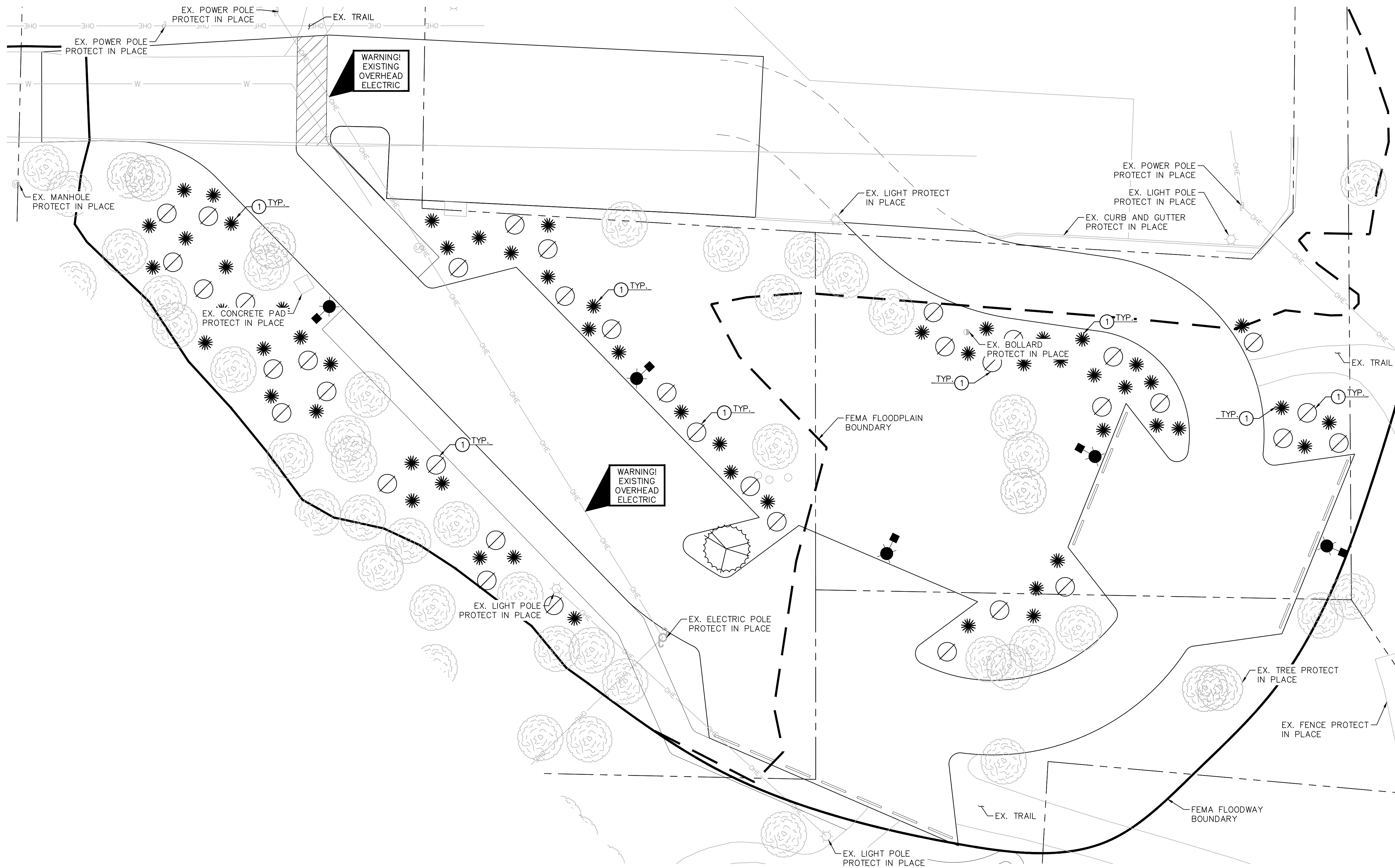
---	PROPERTY LINE
---	PROPOSED CONTOURS
---	EXISTING CONTOURS
5368.25 X	PROPOSED SPOT ELEVATION
FG	FINISHED GRADE ELEVATION
ME	MATCH EXISTING GRADE
GB	GRADE BREAK ELEVATION

**GRADING & DRAINAGE GENERAL NOTES**

1. ALL SPOT ELEVATIONS ARE FINISHED GRADE PAVEMENT (P) ELEVATIONS UNLESS OTHERWISE NOTED.
2. CONTRACTOR SHALL USE SPOT ELEVATIONS, PROPOSED CONTOURS, AND SLOPES TO ESTABLISH GRADES.
3. ALL FILL SLOPES SHALL BE COMPACTED TO 95% RELATIVE DENSITY.
4. SEE GENERAL NOTES FOR COMPLETE LEGEND.
5. GROUNDWATER MAY BE ENCOUNTERED FOR BASIN EXCAVATION. THE CONTRACTOR SHALL BE PREPARED TO DEWATER, OVER EXCAVATE AND ADD LEACH AGGREGATE AS NEEDED.



		DWG. NO. GD01 DATE 11/13/2023 SHEET NO. 06 OF 10
<b>WEST GRANITE CREEK PARKING LOT</b> <b>GRADING AND DRAINAGE</b>		
	PREPARED BY: ALH CHECKED BY: JTH FOR: COP	
<b>Kimley-Horn &amp; Associates, Inc.</b> <small>2023 KIMLEY-HORN &amp; ASSOCIATES, INC. SUITE 303 WEST GOODWIN STREET, SUITE 303 PHOENIX, AZ 85004-4988 WWW.KIMLEY-HORN.COM</small>		
	REVISIONS NO. BY DATE ENGINEER	APPR. DATE CITY
<b>REVIEW:</b>		



VICINITY MAP  
NOT TO SCALE

CONSTRUCTION NOTES

NO	DESCRIPTION
1	NATIVE LANDSCAPING TO BE INSTALLED BY CITY FORCES

NO	DESCRIPTION
1	NATIVE LANDSCAPING TO BE INSTALLED BY CITY FORCES

CITY OF PRESCOTT PUBLIC WORKS  
**WEST GRANITE CREEK PARKING LOT**  
**LANDSCAPING PLAN**

DWG. NO. LS01  
 DATE 11/13/2023  
 SHEET NO. 07 OF 10

**CITY OF PRESCOTT**  
*Everybody's HomeTown*

PREPARED BY: ALH  
 CHECKED BY: JTH  
 FOR: COP

Professional Engineer  
 CERTIFICATE NO. 79615  
 James T. Huggins  
 Date Signed 11/13/23  
 ARIZONA USA

*James T. Huggins*

**Kimley-Horn & Associates, Inc.**  
 2033 KIMLEY-HORN & ASSOCIATES, INC. SUITE 303  
 101 WEST GOODWIN STREET, SUITE 303  
 PHOENIX, AZ 85003  
 PHONE: 602-448-9100  
 WWW.KIMLEY-HORN.COM

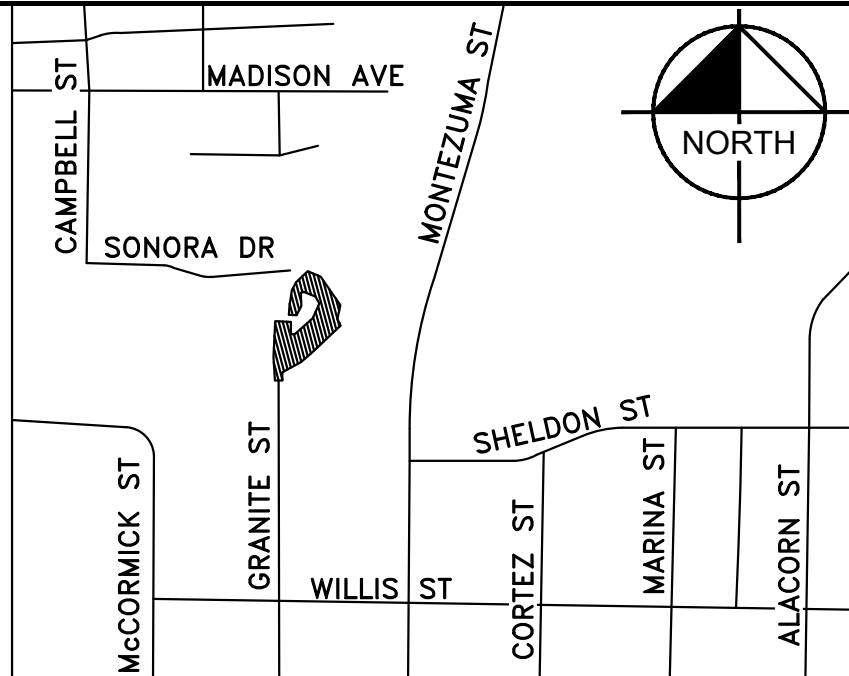
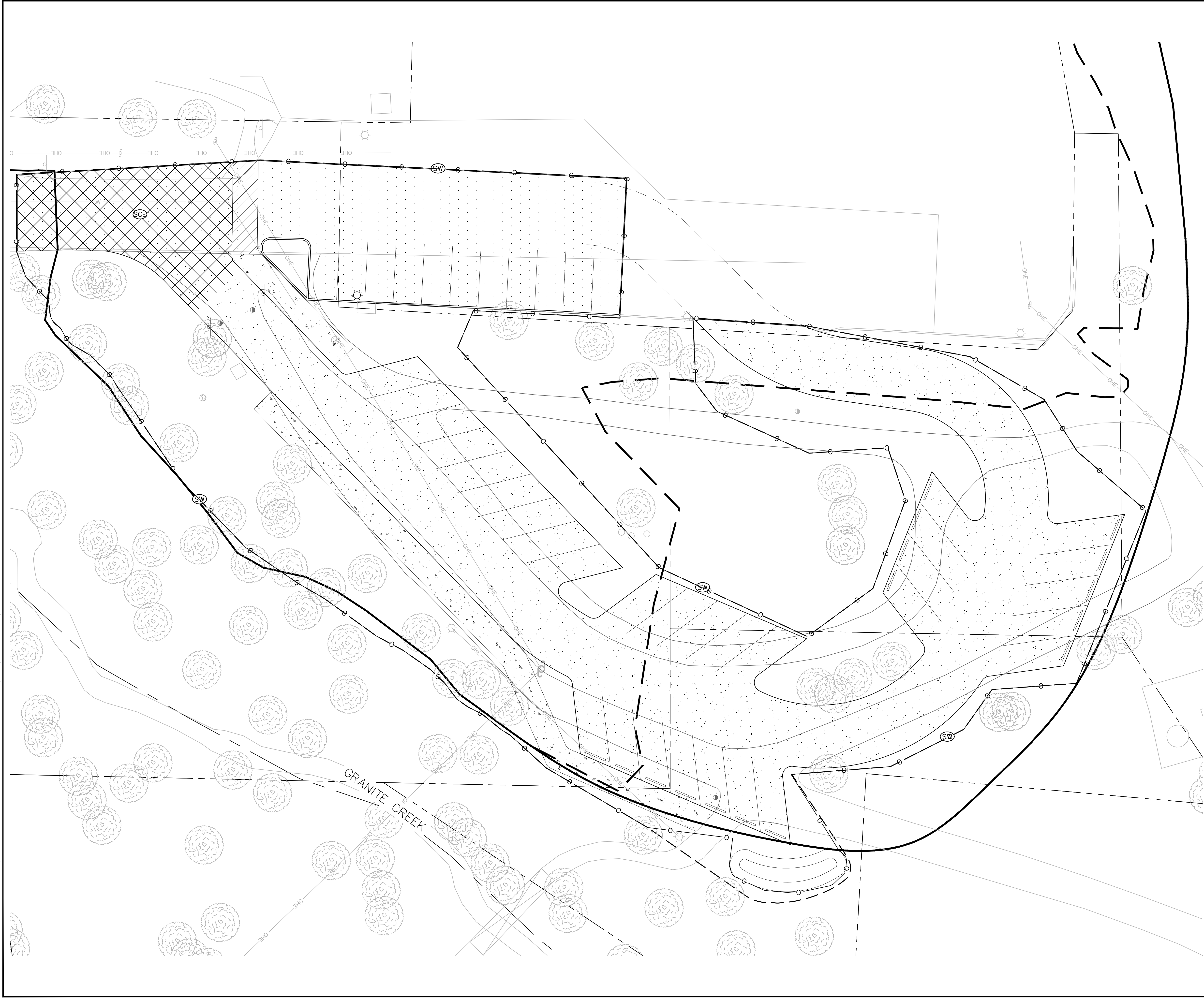
- NOTES**
- SEE GENERAL NOTES SHEET 02 FOR COMPLETE LEGEND.
  - PROTECT IN PLACE ALL EXISTING SURVEY MONUMENTS.

GRAPHIC SCALE IN FEET  
 0 7.5 15 30

Call at least two full working days before you begin excavation.  
**ARIZONA 811**  
 Arizona Blue Stakes, Inc.  
 Dial 8-1-1 or 1-800-STAKE-IT (782-5348)  
 in Maricopa County: (602) 263-1100

NO.	BY	DATE	REVISIONS	APPRV	DATE	CITY

REVIEW: \_\_\_\_\_



VICINITY MAP  
NOT TO SCALE

TEMPORARY EROSION CONTROL NOTES

NO	DESCRIPTION	UNIT	QTY
(SW)	SEDIMENT WATTLE PER DTL. E1 ON SHEET 07.	LF	1310

**STORM WATER MANAGEMENT LEGEND**

—○— (SW) SEDIMENT WATTLE BMP SC-5

- NOTES**
- IF CONTRACTOR DETERMINES THAT ADDITIONAL STABILIZED CONSTRUCTION EXITS/ENTRANCES ARE REQUIRED, ALL SUCH STABILIZED CONSTRUCTION EXITS/ENTRANCES SHALL BE CONSTRUCTED PER DETAILS INCLUDED IN THIS PLAN SET.
  - CONTRACTOR SHALL TAKE ALL NECESSARY MEASURES TO REDUCE DUST GENERATED BY CONSTRUCTION ACTIVITIES.
  - THE CONTRACTOR, WHERE FEASIBLE, SHALL MINIMIZE SIZE OF DISTURBED AREA AND SHALL, WHERE FEASIBLE, LIMIT ON SITE VEHICLE TRAFFIC TO 15 MPH.
  - REFER TO MARICOPA COUNTY STANDARDS FOR FURTHER EROSION AND SEDIMENT CONTROLS.
  - ADEQ 2013 GENERAL CONSTRUCTION PERMIT REQUIRED INCLUDING FILING OF AN NOI, SWPP, AND NOT.
  - POST CONSTRUCTION STORMWATER QUALITY BMP OPERATIONS & MAINTENANCE AGREEMENT IS REQUIRED FOR THE SITES DETENTION BASINS PRIOR TO AN OCCUPANCY PERMIT.

**ARIZONA 811**  
Arizona Blue Stakes, Inc.  
Call at least two full working days before you begin excavation.  
Dial 8-1-1 or 1-800-STAKE-IT (782-5348) in Maricopa County: (602) 263-1100

GRAPHIC SCALE IN FEET  
0 7.5 15 30

REVISIONS

NO.	BY	DATE	ENGINEER

APPRV. DATE CITY

REVIEW: CIP #: 24-103

CITY OF PRESCOTT PUBLIC WORKS

**WEST GRANITE CREEK PARKING LOT**

**EROSION CONTROL**

DWG. NO. ECO1  
DATE 11/13/2023  
SHEET NO. 08 OF 10

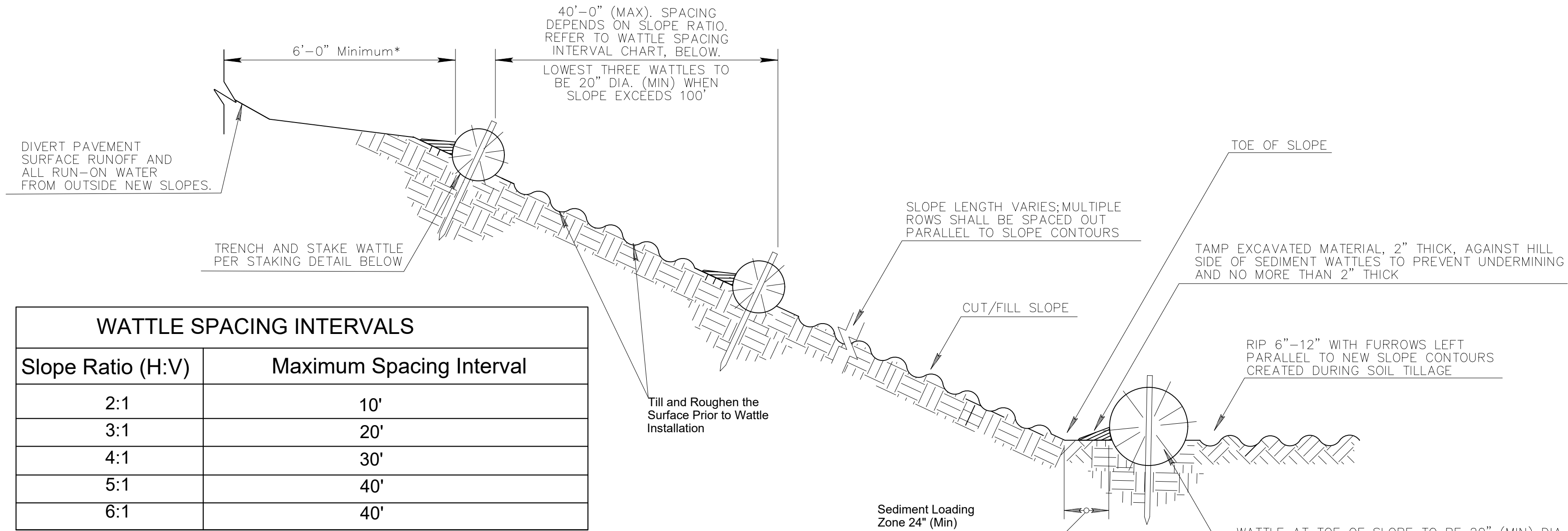
**CITY OF PRESCOTT**  
*Everybody's HomeTown*

Prepared by: ALH  
Checked by: JTH  
For: COP

Professional Engineer  
Registered Certificate No. 79615  
James T. Huggins  
Date Signed 11/13/23  
ARIZONA USA

**Kimley-Horn & Associates, Inc.**  
2033 KIMLEY-HORN & ASSOCIATES, INC. SUITE 303  
101 WEST GOODWIN STREET, PHOENIX, AZ 85003  
PHONE: 602-458-9100  
WWW.KIMLEY-HORN.COM

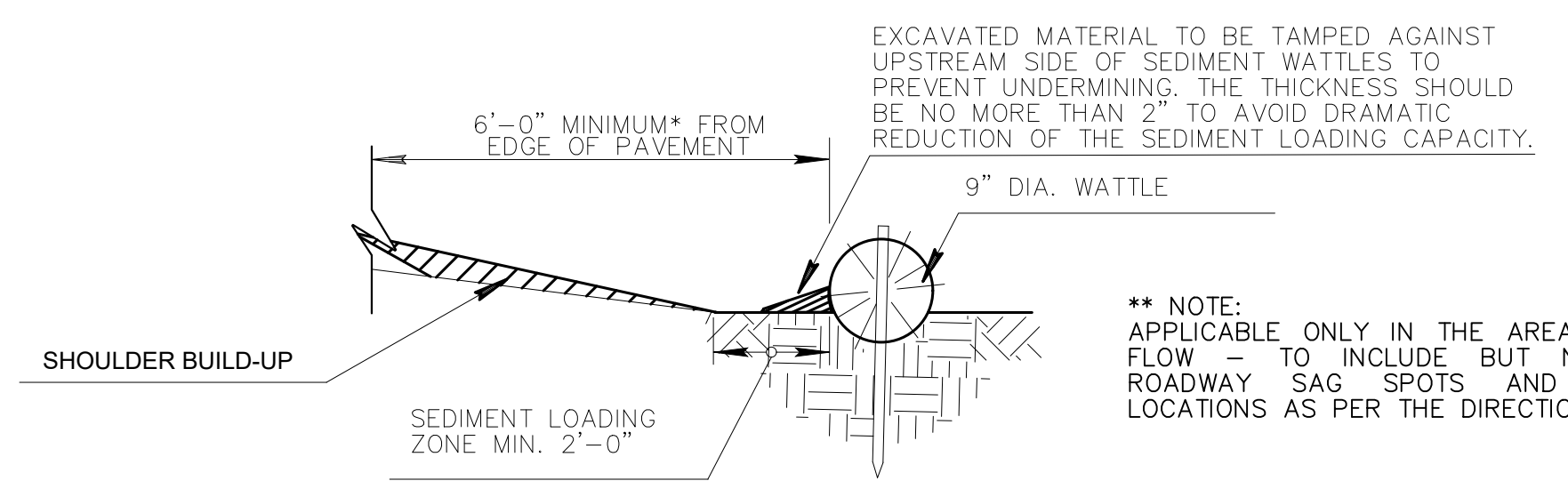




WATTLE SPACING INTERVALS	
Slope Ratio (H:V)	Maximum Spacing Interval
2:1	10'
3:1	20'
4:1	30'
5:1	40'
6:1	40'

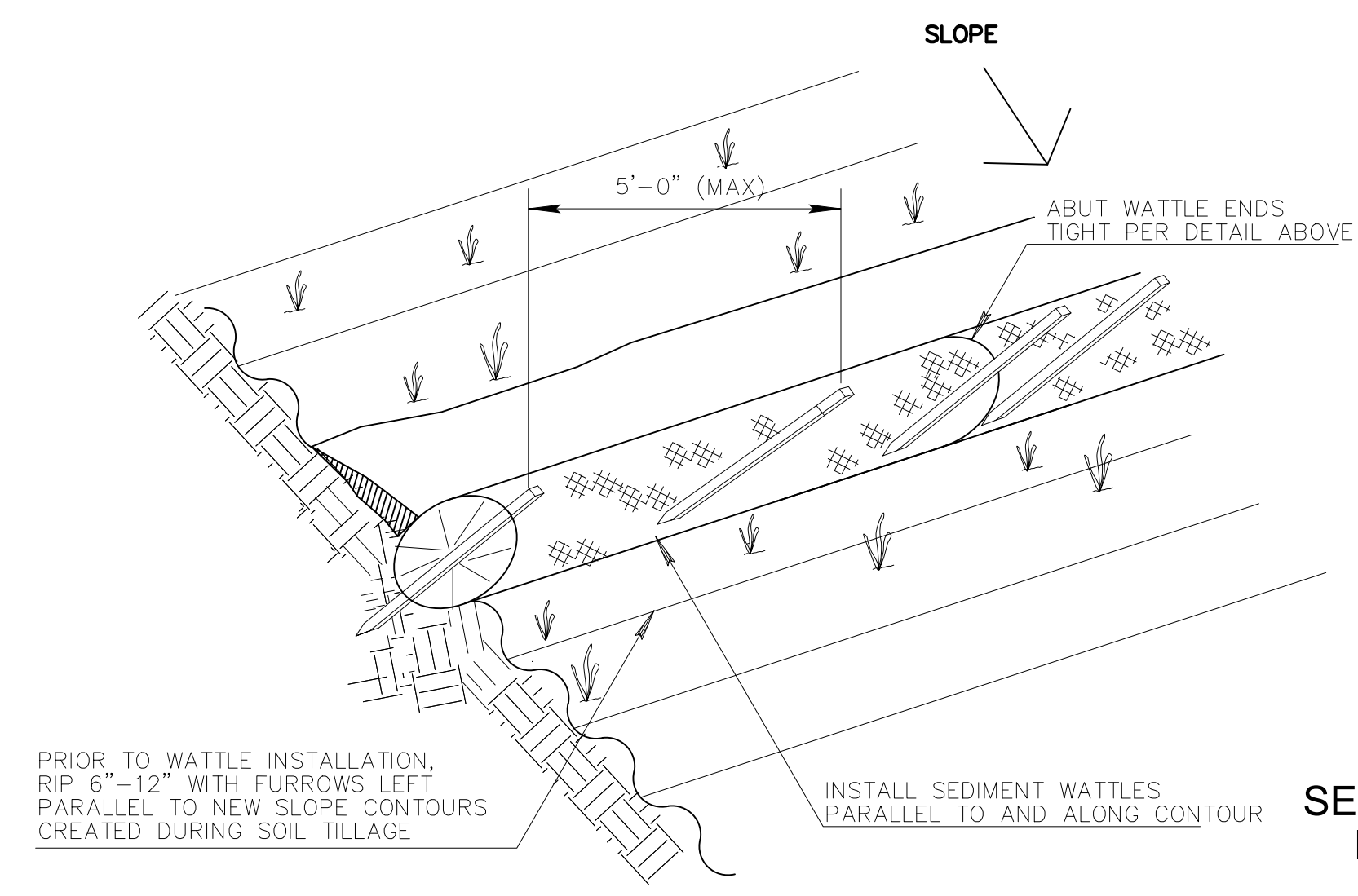
- \* NOTES:**
- 1) TOP ROW SHALL NOT BE PLACED WITHIN 6'-0" OF EDGE OF PAVEMENT AND 9'-0" FROM OUTSIDE SURFACE OF BARRIER.
  - 2) FOR ERODIBLE SOILS, PLACE ROWS OF WATTLES CLOSER TOGETHER.
  - 3) FOR SOILS WITH LOW ERODIBLE POTENTIAL, PLACE ROWS OF WATTLES FURTHER APART.

SECTION (NTS)

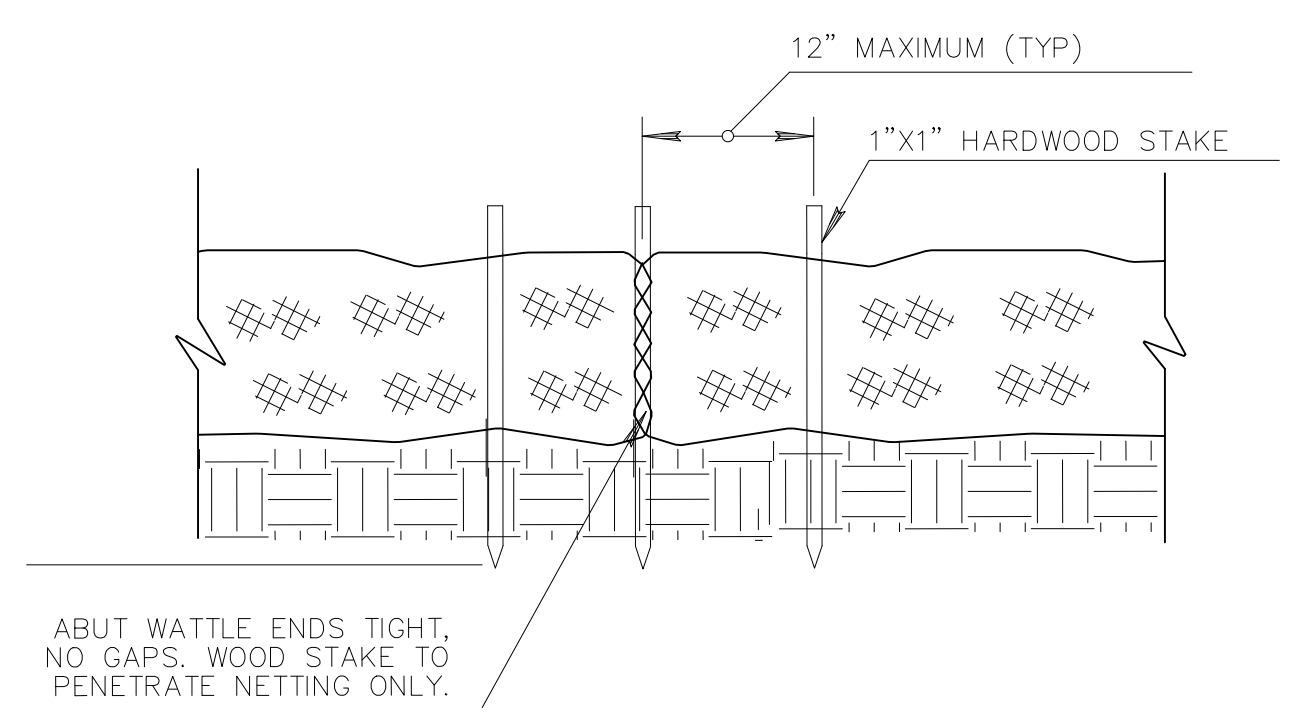


NEW SHOULDER BUILDUP \*\* PROTECTION SECTION (NTS)

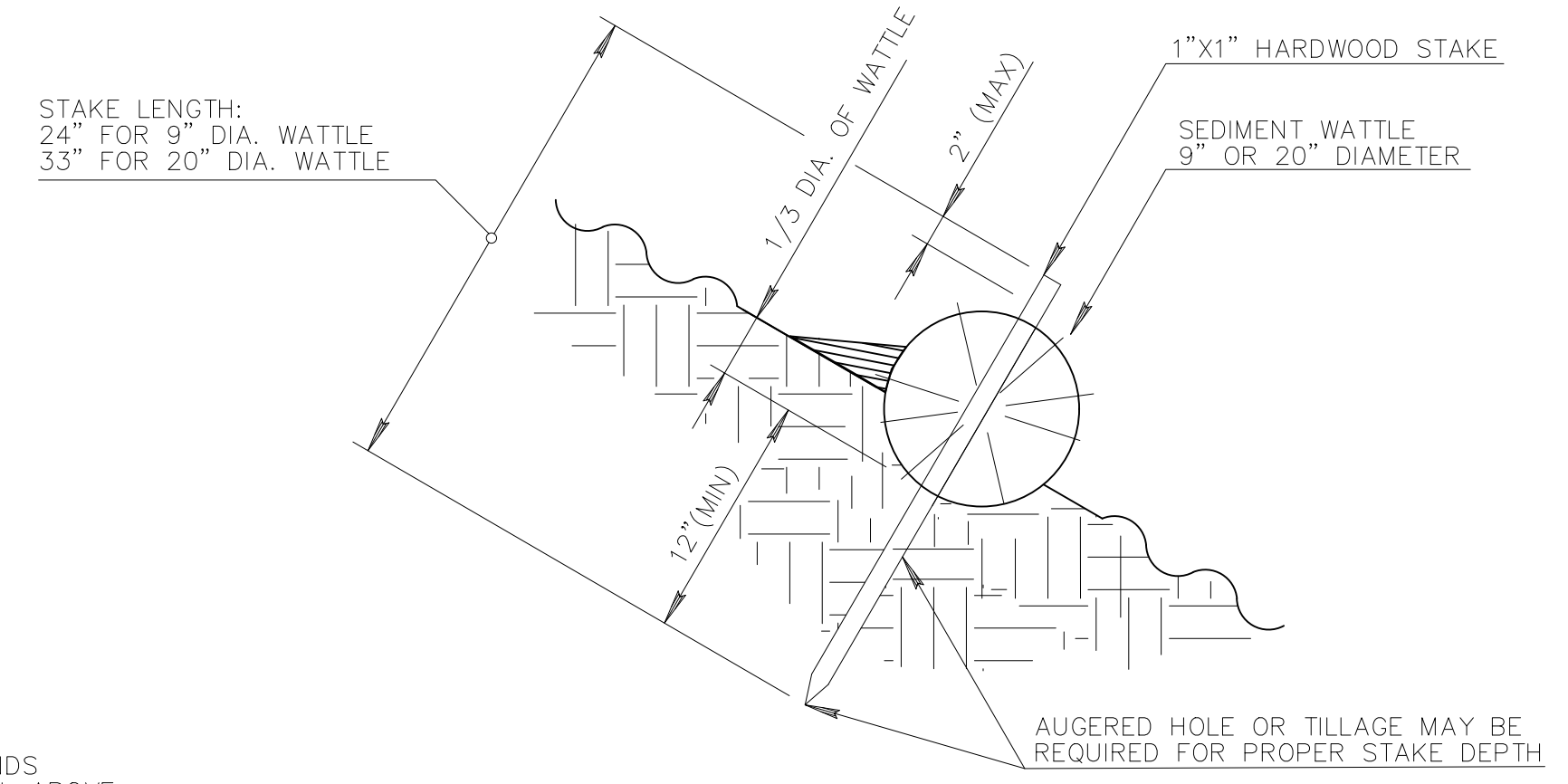
- NOTES:**
1. INSTALL SEDIMENT WATTLES AS SLOPES ARE CONSTRUCTED TO GRADE OR AS DIRECTED BY THE ENGINEER. SELECT, INSTALL AND MAINTAIN IN CONFORMANCE WITH MANUFACTURERS' SPECIFICATIONS TO MEET SITE CONDITIONS FOR SLOPE PROTECTION AND IN ACCORDANCE WITH GOOD ENGINEERING PRACTICES. NO SEDIMENT WATTLES SHALL BE INSTALLED IN URBAN FREEWAY MEDIANS, NOR WHERE CABLE BARRIER SYSTEMS ARE EMPLOYED.
  2. SEDIMENT WATTLES SHALL BE IN CONTINUOUS CONTACT WITH TRENCH BOTTOM AND SIDES. DO NOT OVERLAP WATTLE ENDS ON TOP OF EACH OTHER. A 20" DIA. WATTLE MAY BE MADE FROM 2-3 ROLLED EXCELSIOR OR STRAW BLANKETS.
  3. BUTT ADJOINING WATTLES TIGHTLY AGAINST EACH OTHER. DRIVE THE FIRST END STAKE OF THE SECOND WATTLE AT AN ANGLE TOWARD THE FIRST WATTLE TO HELP ABUT THEM TIGHTLY.
  4. REPAIR ANY RILLS OR GULLIES PROMPTLY. MAKE FIELD ADJUSTMENTS AND CORRECTIONS OF WATTLE BMP IMMEDIATELY IF IT IS CAUSING FLOODING, EROSION, AND/OR AFFECTING ROADWAY SAFETY.
  5. CONSTRUCTION OF CUT SLOPES 2:1 AND STEEPER IN SOIL AND ROCK MATERIALS THAT CAN BE RIPPED SHALL BE CONSTRUCTED, WHENEVER POSSIBLE, BY MINIBENCHING. REFER TO SLOPE MINIBENCHING BMP DETAIL.
  6. LOOSENING SURFACE SOIL IS NOT REQUIRED WHERE MINIBENCHES ARE USED. FOR SEEDED AREAS, TILLAGE SHALL BE PERFORMED TO FORM MINOR RIDGES AND FURROWS PARALLEL TO NEW SLOPE CONTOURS AND AS SPECIFIED IN SECTION 805 OF THE STANDARD SPECIFICATIONS AND THESE SPECIAL PROVISIONS.
  7. DIVERT AND DIRECT RUN-ON WATER FROM OUTSIDE OF THE SLOPES TO THE SPILLWAYS AND/OR ROCK RIPRAP/ROCK MULCH. DIVERSION DIKES AND/OR DITCHES ARE NECESSARY ON NATURAL UNDISTURBED SLOPES BEYOND THE TOP LIMITS OF NEW SLOPES TO DIVERT RUN-ON WATER.
  8. INSTALLATION AND MAINTENANCE OF SEDIMENT WATTLE BMPs SHALL NOT NEGATIVELY IMPACT TRAFFIC SAFETY, NOR THE DESIGNED FUNCTION OF ROADWAY OR BRIDGE DRAINAGE FACILITIES.
  9. INSTALL AND MAINTAIN SEDIMENT WATTLE BMPs TO CARRY THE STORMWATER OF AT LEAST 2-YEAR, 24-HOUR EVENTS.
  10. THE SEDIMENT WATTLE BMP'S PAY/BID ITEM SHALL INCLUDE ALL MATERIALS USED FOR THIS BMP: ALL GROUND PREPARATION, FURNISHING, INSTALLING, MAINTENANCE, FINAL REMOVAL AND DISPOSAL OF THIS TEMPORARY BMP, AS WELL AS RETURNING THE AREA TO AN ACCEPTABLE CONDITION AS APPROVED BY THE ENGINEER.
  11. REFER TO STANDARD SPECIFICATION SECTION 810-2.06(C) FOR SEDIMENT WATTLE MATERIAL SPECIFICATIONS.
  12. MAKE FIELD ADJUSTMENTS AND CORRECTIONS TO ENSURE NO SENSITIVE BIOLOGICAL RESOURCES (NATIVE SPECIES / HABITATS) WILL BE ADVERSELY IMPACTED.



SEDIMENT WATTLE LAYOUT (NTS)



SEDIMENT WATTLE OVERLAP (NTS)

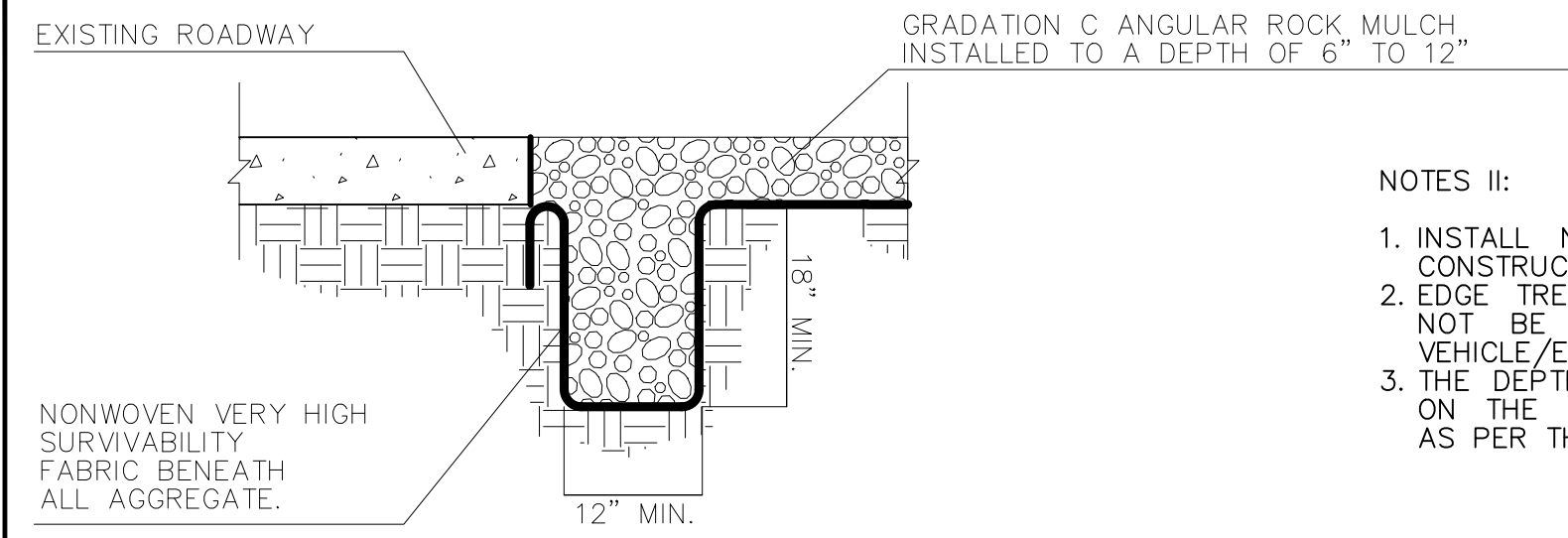


SEDIMENT WATTLE STAKING DETAIL (NTS)

**DETAIL E1**  
BMP SC-5: SEDIMENT WATTLE



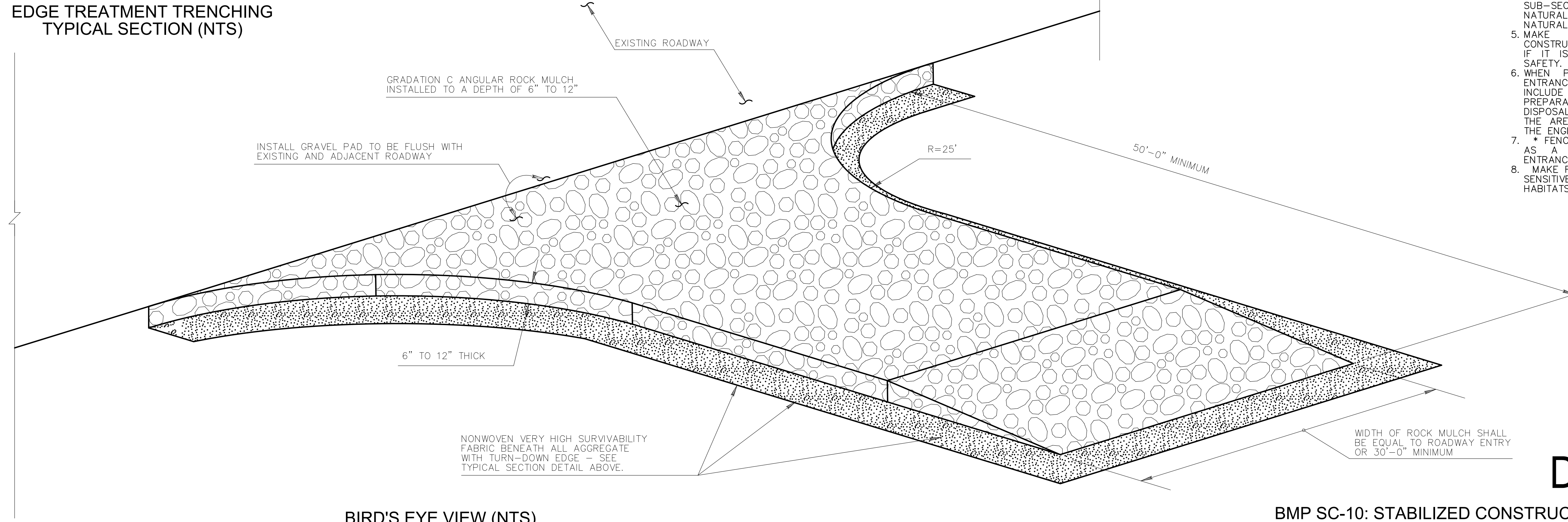
CITY OF PRESCOTT PUBLIC WORKS		DWG. NO. ECO2	DATE 11/13/2023	SHEET NO. 09	OF 10
WEST GRANITE CREEK PARKING LOT		EROSION CONTROL DETAILS			
CITY OF PRESCOTT <i>Everybody's HomeTown</i>		PREPARED BY: ALH	CHECKED BY: JTH	FOR: COP	
Professional Engineer 79615 James T. Huggins Date Signed 11/13/23 ARIZONA USA					
Kimley-Horn & Associates, Inc. 2033 KIMLEY-HORN & ASSOCIATES, INC. SUITE 303 101 WEST GOODWIN STREET, PHOENIX, AZ 85003 PHONE: 602-448-9100 WWW.KIMLEY-HORN.COM		APPRV. DATE	CITY	REVISIONS	REVIEW:
		NO.	BY	DATE	ENGINEER



EDGE TREATMENT TRENCHING TYPICAL SECTION (NTS)

NOTES II:

1. INSTALL NONWOVEN FABRIC WHEN WATER IS APPLIED FOR CONSTRUCTION VEHICLE/EQUIPMENT CLEANING ON GRAVEL PAD.
2. EDGE TREATMENT TRENCHING AND NONWOVEN FABRIC SHALL NOT BE REQUIRED IF NO WASH WATER IS USED FOR VEHICLE/EQUIPMENT CLEANING.
3. THE DEPTH OF GRAVEL PAD VARIES FROM 6" TO 12" BASED ON THE NECESSITIES OF CONSTRUCTION VEHICLE/EQUIPMENT AS PER THE APPROVAL OF THE ENGINEER.



BIRD'S EYE VIEW (NTS)

NOTES I:

1. INSTALL STABILIZED CONSTRUCTION ENTRANCE/EXIT GRAVEL PAD BMP FOR TRAFFIC ENTERING OR EXITING A CONSTRUCTION SITE WHERE SEDIMENTATION, CLAY, SILT OR OTHER POLLUTANTS CAN BE TRACKED ONTO PUBLIC ROADS AND/OR ADJACENT WATER BODIES, AS APPROVED BY THE ENGINEER. IT MAY ALSO BE APPLIED FOR CONSTRUCTION ENTRANCE/EXIT WIND EROSION/DUST CONTROL, AS APPROVED BY THE ENGINEER.
2. LOCATE NEW CONSTRUCTION ENTRANCE(S)/EXIT(S) AT APPROPRIATE PROJECT ENTRANCE/EXIT POINTS AS DETERMINED IN FIELD WITH THE APPROVAL OF THE ENGINEER. RELOCATE STABILIZED CONSTRUCTION ENTRANCE/EXIT GRAVEL PAD BMP AS NEEDED AS PROJECT PROGRESSES. REPLACE ROCK MULCH MATERIALS IN DRIVE PATHS WHEN DIRT OR MUD ACCUMULATES.
3. NONWOVEN VERY HIGH SURVIVABILITY FABRIC SHALL CONFORM TO THE STANDARDS OF SUB-SECTION 1014-4.04 OF THE STANDARD SPECIFICATIONS.
4. ROCK MULCH MATERIALS SHALL BE FRACTURED/CRUSHED ROCKS IN ANGULAR SHAPE AND AS DEFINED IN THE SUB-SECTION 810-2.03 OF THE STANDARD SPECIFICATIONS. NATURAL RIVER-RUN MATERIALS, ESPECIALLY ROUNDED NATURAL RIVER ROCKS ARE NOT ACCEPTABLE.
5. MAKE FIELD ADJUSTMENTS AND CORRECTIONS OF CONSTRUCTION ENTRANCE/EXIT GRAVEL PAD BMP IMMEDIATELY IF IT IS CAUSING FLOODING AND/OR AFFECTING ROADWAY SAFETY.
6. WHEN PAID SEPARATELY, THE STABILIZED CONSTRUCTION ENTRANCE/EXIT GRAVEL PAD BMP'S PAY/BID ITEM SHALL INCLUDE ALL MATERIALS USED FOR THIS BMP: ALL GROUND PREPARATION, FURNISHING, INSTALLING, FINAL REMOVAL, AND DISPOSAL OF THIS TEMPORARY BMP, AS WELL AS RETURNING THE AREA TO AN ACCEPTABLE CONDITION AS APPROVED BY THE ENGINEER.
7. \* FENCE/BARRICADE PAY/BID ITEM SHALL NOT BE INCLUDED AS A COMPONENT OF THE STABILIZED CONSTRUCTION ENTRANCE/EXIT GRAVEL PAD BMP PAY/BID ITEM.
8. MAKE FIELD ADJUSTMENTS AND CORRECTIONS TO ENSURE NO SENSITIVE BIOLOGICAL RESOURCES (NATIVE SPECIES / HABITATS) WILL BE ADVERSELY IMPACTED.

BMP SC-10: STABILIZED CONSTRUCTION ENTRANCE/EXIT GRAVEL PAD

DETAIL E2



CITY OF PRESCOTT PUBLIC WORKS		DWG. NO. EC03
WEST GRANITE CREEK PARKING LOT		DATE 11/13/2023
EROSION CONTROL DETAILS		SHEET NO. 10 OF 10
		PREPARED BY: ALH CHECKED BY: JTH FOR: COP
		PREPARED BY: ALH CHECKED BY: JTH FOR: COP
		© 2023 KIMLEY-HORN & ASSOCIATES, INC. SUITE 303 101 WEST GOODWIN STREET, PHOENIX, AZ 85003 PHONE: 602-448-9100 WWW.KIMLEY-HORN.COM
NO.	BY	DATE
	ENGINEER	
	REVISIONS	
		CITY